

Reportlink

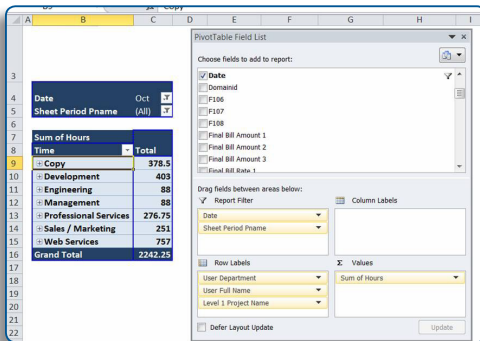
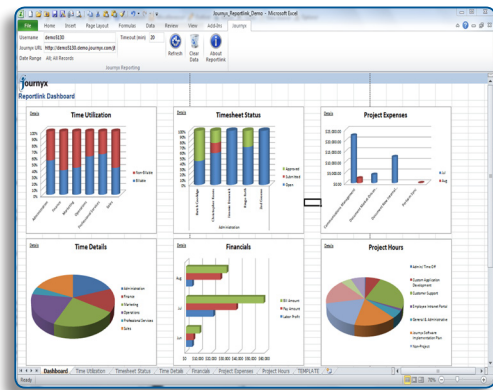
Dynamic Graphical Reporting for Powerful Data Analysis

Journyx Timesheet and ProjectXecute 8.7 offer a new, completely customizable module that expands the standard functionality of Journyx to meet the needs of organizations with complex reporting needs. There's no better way to reports that use data already at your fingertips. With a one step installation, Reportlink seamlessly syncs to Microsoft Excel® taking your organization to the next level of reporting.

Powerful Data Analysis

For those times when Journyx's built-in reporting engine just isn't enough, Reportlink gives you the ability to more deeply analyze your time, expense and resource data. With Reportlink, you will gain quicker insight into which projects are more profitable.

Reportlink's multifaceted functionality gives you endless reporting abilities allowing you to satisfy any of your reporting needs. With an impressive variety of visually dynamic graphs that are advanced yet easy to read, analyzing reports takes seconds.



Intuitive and Easy to Use

Reportlink syncs dynamically from Journyx to Microsoft Excel making reporting intuitive, quick and simple. Because Reportlink works seamlessly with Excel, you likely already have all the knowledge and training you need to analyze data and create detailed reports. There's no need to purchase any extra specialized training in order to fully benefit from Reportlink's data analysis features.

Easily Customize and Share Reports

Reportlink is much, much more than a simple data export. Once configured, you can easily create templates, sync your Journyx data, and save the results as sharable Excel files that can be tailored to Journyx user specific settings. Imagine being able to prepare time and expense reports for your organization in no time at all.

