



# Journyx ProjectXecute

## Project Resource Management for Timesheet

Journyx ProjectXecute is the latest addition to our arsenal of innovative tools for working with projects in the 21st Century. It provides functionality in the areas of forecasting and execution as well as introducing an entirely new, yet intuitive, interface to address your project resource planning needs.

Though it possesses some familiar features, Journyx ProjectXecute does not seek to duplicate or replace any particular project planning tool. Rather, it combines the most useful aspects found across the spectrum of project planning applications with new, previously unavailable features to create an easy-to-use resource planning tool that works in tandem with other applications to make the entire project execution process more efficient than ever before.

### Who Can Benefit From Journyx ProjectXecute?

Journyx ProjectXecute is designed to help any organization that needs to simplify the management of multiple projects for its scarce, skilled workforce.

- You need to complete projects on time, within budget, and to know when projects are out of scope.
- You need to know if your team is working on the projects that are the most profitable for your company's overall strategy and mission.
- You have a mixture of long term, capital projects that require very detailed schedules and planning along with smaller projects that require very light schedules and simple resource assignments.
- You need to allocate scarce staff resources among competing projects while avoiding the complications of overbooking.

### What Journyx ProjectXecute Provides

Successful project execution requires doing two things very well: tracking and managing the progress of your current projects, and estimating your future projects more accurately. Journyx ProjectXecute drives your projects to success by providing accurate information about time spent on projects, schedule updates, estimated time to complete, who is responsible for the work and how the work is done.

#### Journyx ProjectXecute provides:

- Project Resource Management
- Project Actual Work Reporting
- Billable Time Reporting
- A Central Repository for Project and Resource Data
- Material and Reimbursable Expense Tracking
- Project Cost Accounting
- Real-Time Status Reporting
- Overhead and Leave Tracking
- Integration with Microsoft Project™ and ERP, Accounting, HR, & Payroll systems
- A Dashboard for Quick Review of Work Status

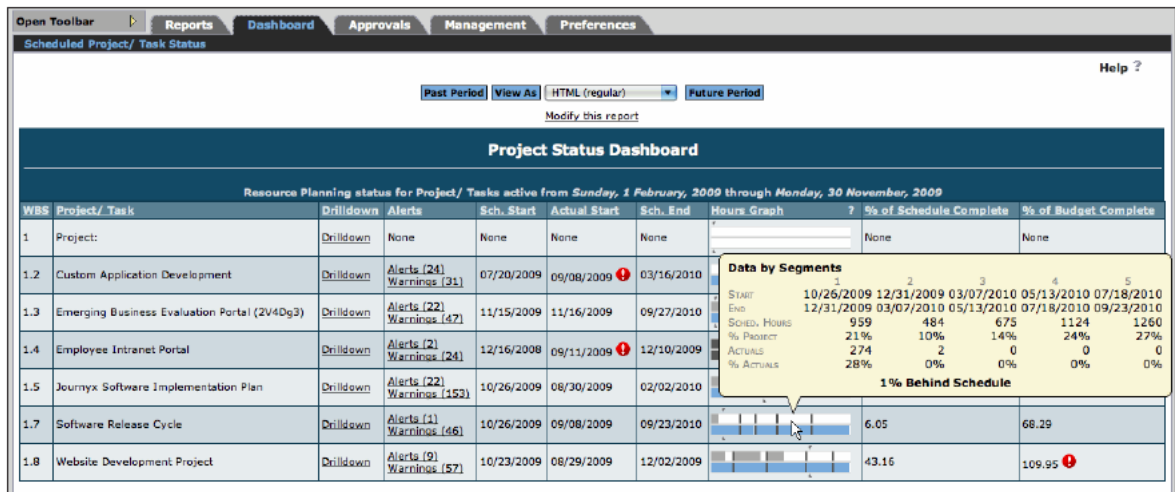


## How Project Teams Interact With Journyx ProjectXecute

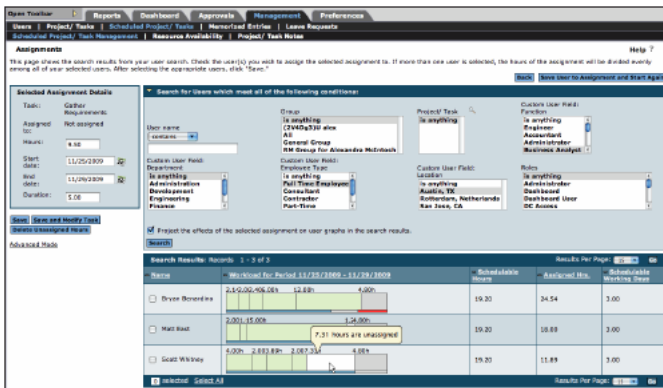
Following are examples of the screens and tasks that typical project teams, supervisors, and executive sponsors will encounter in Journyx ProjectXecute.

### Project Managers

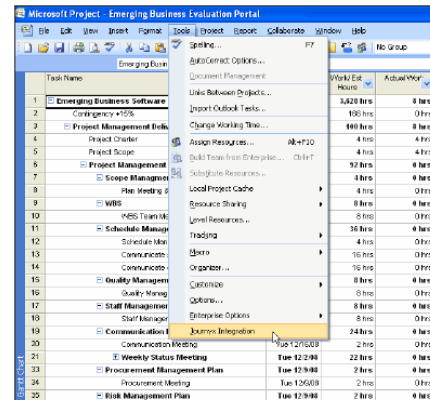
Using Journyx ProjectXecute, your organization's Project Managers gain access to real-time project and productivity data for decision support. Supplementing this view are project alerts that notify PMs when a schedule slips, or when a resource is over allocated or requests additional time to complete a specific task. Journyx ProjectXecute also provides visibility into team member schedules and the ability to assign resources based on availability, skill, location, or other criteria. Thanks to its highly-integratable nature, your PMs can continue to take full advantage of other systems, including Microsoft Project and Project Server.



The Project Manager Dashboard



The Resource Assignment Screen



MS Project Integration Is a Click Away

### Project Team Members

Project Team Members benefit from an integrated, simple-to-use yet precise time and expense entry, available from any location that has an internet connection. Your team gains visibility into their current assignments along with the ability to update their project status and estimated time to complete specific tasks.



Assignment	Progress on Week Plan	Week Schedule	Start	End	Progress	Remain	Est. Remain	Finished
Communications Management	1.00 / 2.31	1.00	10/26/2009	12/02/2009	15.00 / 20.00h	5.00h	10.00	<input type="checkbox"/>
Conduct Pilot	3.00 / 5.50	1.00 2.00	11/11/2009	11/18/2009	17.50 / 20.00h	2.50h	2.50	<input type="checkbox"/>
Customization Requirements	3.00 / 3.00	1.50 1.50	11/11/2009	11/17/2009	8.00 / 8.00h	0.00h	0.00	<input checked="" type="checkbox"/>
Document Market-Driven Require...	1.00 / 2.42	1.00	10/26/2009	12/04/2009	13.75 / 20.00h	6.25h	6.25	<input type="checkbox"/>
Document New Internal Requirem...	0.50 / 3.33	0.50	10/26/2009	12/04/2009	14.50 / 24.00h	9.50h	9.50	<input type="checkbox"/>
Perform Sync	3.00 / 4.75	1.00 2.00	11/04/2009	11/19/2009	18.25 / 20.00h	1.75h	1.75	<input type="checkbox"/>
Pilot User Monitoring (i.e. Adm...	2.50 / 2.50	0.50 1.50 0.50	11/11/2009	11/18/2009	10.00 / 10.00h	0.00h	0.00	<input checked="" type="checkbox"/>
User Acceptance Test - Databas...	1.00 / 18.00	1.00	11/16/2009	11/29/2009	1.00 / 18.00h	17.00h	17.00	<input type="checkbox"/>
Assignment Totals	18.00 / 41.81	6.50 7.00 1.50						
Other Tasks		1.50 1.50						
Total Reported Hours	18.00	8.00 8.50 1.50						

A User's My Assignments Screen

### Department Managers

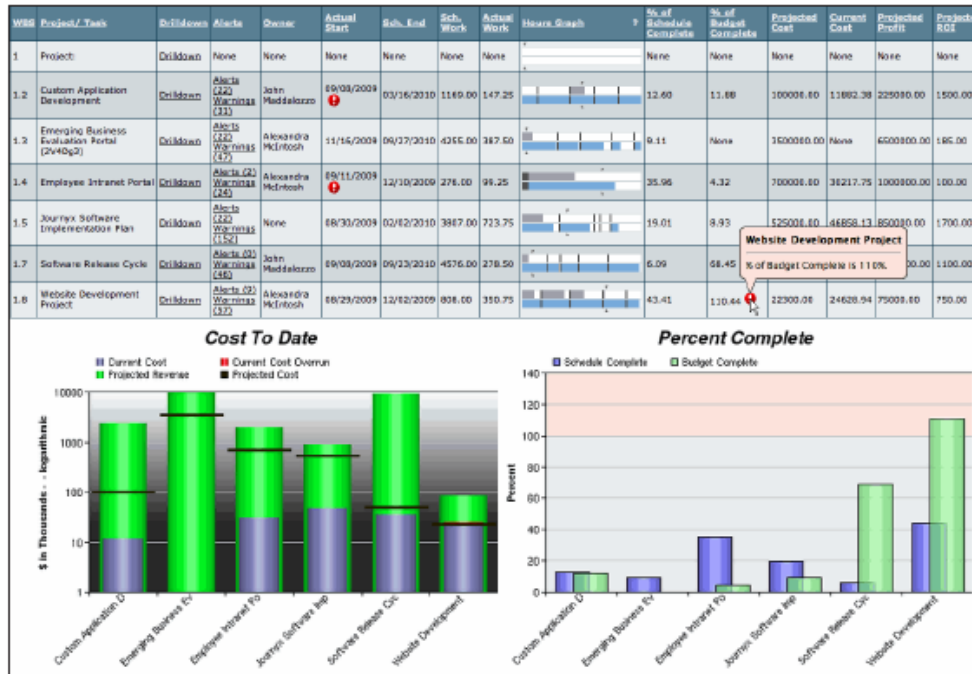
With automated approval workflows and visibility into team member availability, your organization's Department Managers can approve requests for additional time, communicate with resources and accurately schedule future projects.

Name	Workload for Period 11/23/2009 - 11/27/2009	Schedulable Hours	Assigned Hrs.	Schedulable Working Days
Bruce McGraw	32.00h	32.00h	0.00h	5.0
Andrew Reuter	4.00 2.13 3.33h 18.00h	32.00h	37.33h	5.0
Christine Chun	4.00 13.33h 14.67h	32.00h	17.33h	5.0
Faith Lingrel	3.4 (13.33h 25.00h 18.00h 8.00h)	32.00h	63.67h	5.0
John Smith	3.11 4.26 7.33h 13.33h 25.00h	32.00h	54.35h	5.0
Julie Standford	2.31 6.48h 25.00h	32.00h	36.00h	5.0
Randy Miller	3.57 3.33h 6.48h 16.95h	32.00h	15.05h	5.0
Steve Macias	3.33 6.48h 20.52h	32.00h	11.48h	5.0

A Manager's View of Her Staff

### Executive/Corporate

Journyx ProjectXecute gives executives the data they need to make decisions effectively. On an organization-wide level, Journyx ProjectXecute leads to increased earnings through greater accuracy and resource utilization.



The Executive Dashboard Screen

### The Search Is Over

Journyx ProjectXecute provides distributed project, resource management, and time solutions for optimizing resources across organizational boundaries. From scalability and ease in administration to convenient data entry, real-time reporting, and status updates, Journyx ProjectXecute makes the optimization of resources a reality. Any entity that performs project oriented work, bills for its services, analyzes employee time, tracks absences for a professional workforce, or needs to have visibility into what is going on within the organization will benefit from this solution from Journyx.

If you've been looking for a way to track project time and progress effectively, to integrate all of your project data, to have updated status and decision making information across all projects, within a single system that works for the whole company, your search is over. Journyx ProjectXecute is the answer.

### How To Find Out More

Journyx ProjectXecute is ideal for organizations with more than 100 users, and is available as both a licensed, self-hosted application and as a rapid rollout Software-as-a-Service solution. Journyx ProjectXecute is also easy to implement - an organization of 500 users can be up and running in just under 6 weeks. Best of all, priced at a fraction of the cost of other resource management systems, Journyx ProjectXecute doesn't strain your budget.

For more information about Journyx ProjectXecute, call 1-800-755-9878 to speak with an account representative.